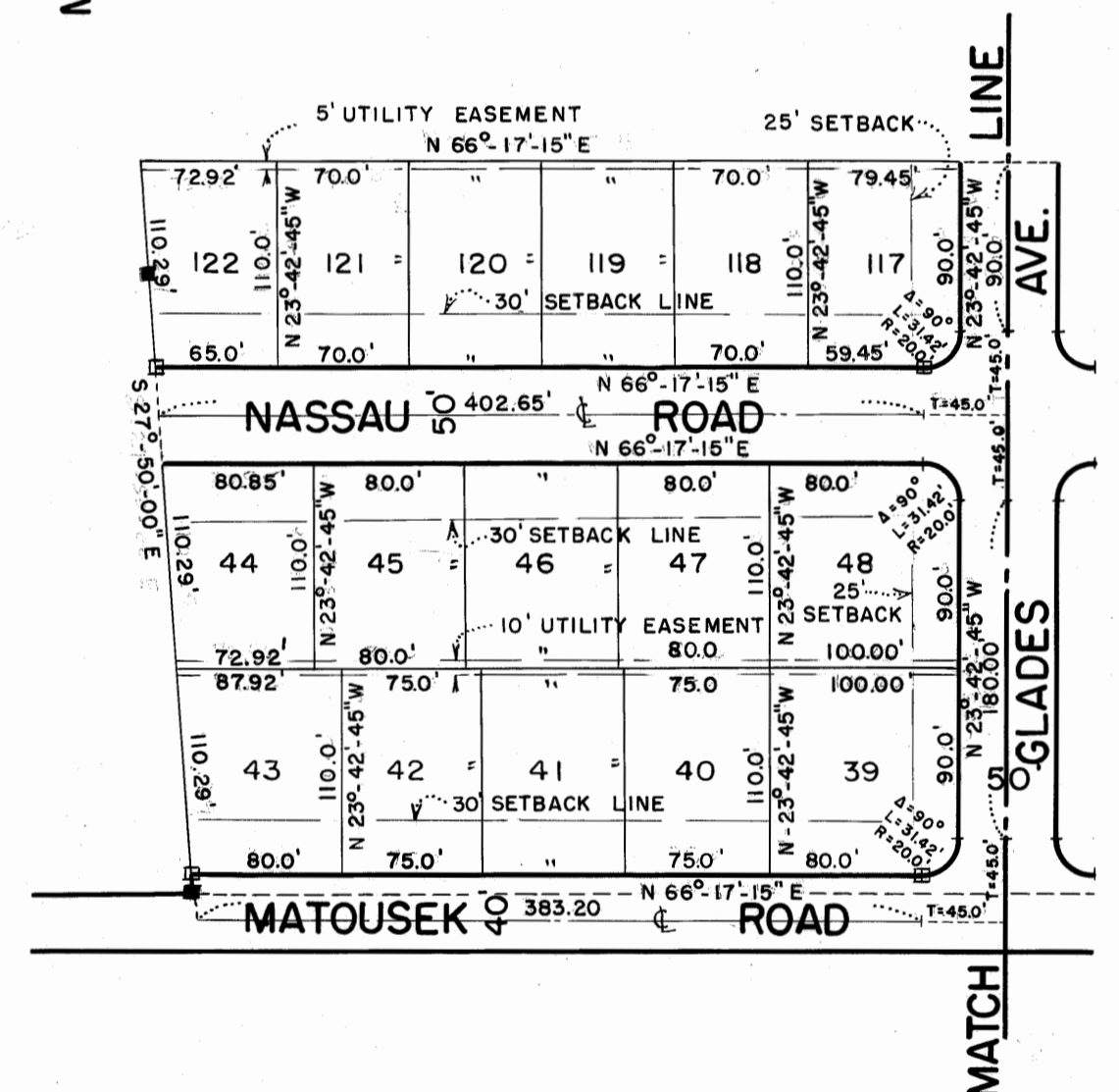
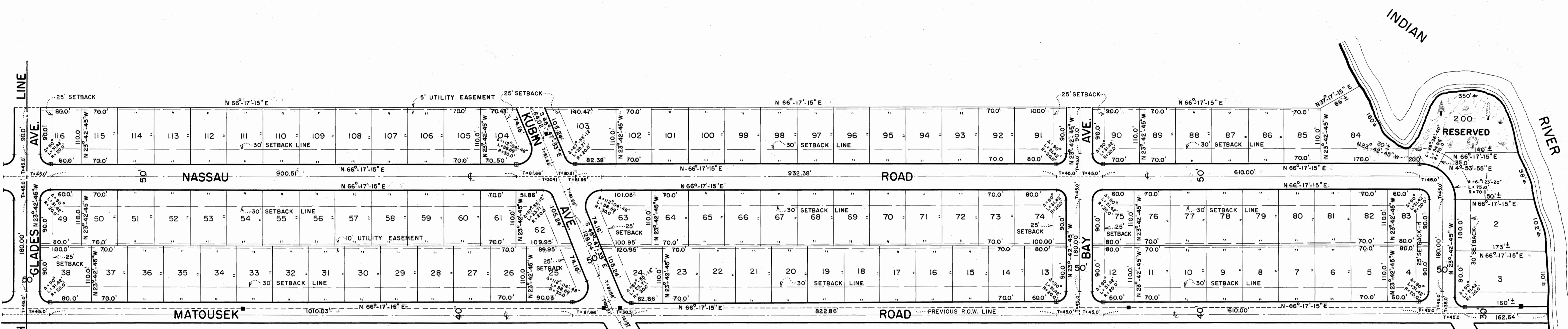


THIS PLAT FILED FOR RECORD AT *Stuart*,
 THIS 18th DAY OF March A.D., 1957
 AND RECORDED IN PLAT BOOK 3,
 PAGE 63 IN THE OFFICE OF THE
 CLERK OF THE CIRCUIT COURT, MARTIN
 COUNTY, FLORIDA, at 11:22 A.M.
 CLERK OF THE CIRCUIT COURT *Dorothy Pierce, Clerk*
 FILE NO. 56402 *By Mignon Rowe*



SCALE 1" = 100'

ACKNOWLEDGEMENT

State of New Jersey S.S.
 County of Passaic
 Before me this day personally appeared John I. Blauvelt and Sol Kurlander, President and Secretary, respectively, of LAND DEVELOPMENT CORP., and acknowledged that they executed the dedication, hereon shown, for the uses and purposes therein stated, on behalf of the said corporation.
 Witness my hand and official seal
 at LITTLE FALLS, N.J.
 this 21st day of February, A.D., 19 57

William T. Lisle
 NOTARY PUBLIC

NOV. 3, 1958
 MY COMMISSION EXPIRES

CERTIFICATE

State of Florida S.S.
 County of Martin
 I hereby certify that the plat shown hereon is a true and correct representation of a survey made under my direction, and that said survey was accurate, to the best of my knowledge and belief, and that permanent reference monuments were placed as prescribed by law.

James E. Brock
 REGISTERED LAND SURVEYOR
 FLORIDA CERTIFICATE NO. 688

Subscribed and sworn to this 18 day of Mar., A.D., 19 57 at Stuart, Florida.

Mignon B. Rowe
 NOTARY PUBLIC
 MY COMMISSION EXPIRES MARCH 4, 1960

DEDICATION
 State of Florida S.S.
 County of Martin

Know all men by these presents:
 That LAND DEVELOPMENT CORP., a corporation organized and existing under the laws of the State of Florida has caused the attached plat to be made and the land to be subdivided as shown hereon, and does hereby affirm that said corporation is the owner of the land subdivided and particularly described under the above title caption, and does hereby dedicate, to the perpetual use of the public, the roads shown hereon.
 In Witness Whereof, LAND DEVELOPMENT CORP. has caused these presents to be signed by its President and its corporate seal to be affixed and attested by its Secretary, this 21st day of Feb., A.D., 19 57

SIGNED *John I. Blauvelt* President
 ATTEST *Sol Kurlander* Secretary

SECOND MAP
 OF

ROCKY POINT ESTATES
 ROCKY POINT, MARTIN COUNTY, FLORIDA

A PARTIAL SUBDIVISION OF LOTS 43, 44, 49 & 50 AS SHOWN ON PLAT OF SUBDIVISION OF LOTS 13 & 14, HANSON GRANT, T38S, R41 & 42E, FILED JUNE 29, 1910, PLAT BOOK 1, PAGE 89, PUBLIC RECORDS OF PALM BEACH COUNTY.

NOTE:
 □ - Symbol for proposed permanent reference monument.
 ■ - " " existing " " "
 Bearings refer to the true meridian.
 Public utilities easement is reserved over the rear five feet (5') of lots where shown.

APPROVED

BOARD OF COUNTY COMMISSIONERS
 By: *Samuel Gidson* Chairman

STAFFORD & BROCK
 CIVIL ENGINEERING - SURVEYING
 STUART, FLORIDA

DATE: Jan. 1957
 Drawn By: